

49Nm On/Off Large Butterfly Valve Actuators

Features



- Maintenance free
- Position indicator
- Adjustable stops

Specification

| | |
|---------------------|----------------------------|
| Output torque: | |
| VB-UNIC10 | 49Nm |
| VB-UNIC20 | 98Nm |
| Power supply | 24Vac, 24Vdc or 230Vac |
| Power consumption | 80W |
| Travel time (50Hz): | |
| VB-UNIC10 | 15 seconds |
| VB-UNIC20 | 30 seconds |
| Manual operation | By detachable crank handle |
| Conduit entry | 2 x G ½" |
| Cable gland | 1 x Cable dia. 6.5 - 10.5. |
| Protection | IP65 |
| Material | Die cast aluminium |
| Fluid temperature | 65°C max. |
| Ambient range | -25 to 55°C |
| Country of origin | Japan |

Product Codes

| |
|------------------------------|
| VB-UNIC10-15-24AC |
| 49Nm, 24Vac on/off actuator |
| VB-UNIC10-15-24DC |
| 49Nm, 24Vdc on/off actuator |
| VB-UNIC10-15-230 |
| 49Nm, 230Vac on/off actuator |
| VB-UNIC10-30-24AC |
| 98Nm, 24Vac on/off actuator |
| VB-UNIC10-30-24DC |
| 98Nm, 24Vdc on/off actuator |
| VB-UNIC10-30-230 |
| 98Nm, 230Vac on/off actuator |

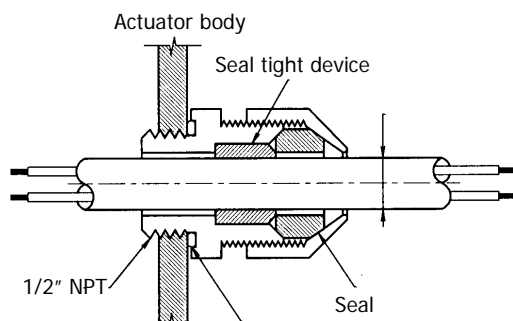
Technical Overview

The VB-UNIC10 range of rotary actuators are suitable for the VB-W range of butterfly valves from 150mm.

It is a compact and powerful unit with a manual override lever and end switches fitted as standard.

Installation

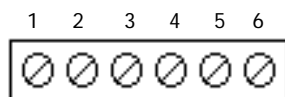
1. The VB-UNIC10 should only be installed by a competent, suitably trained technician, experienced in installation with hazardous voltages. (>50Vac & <1000Vac or >75Vdc & 1500Vdc.
2. This product is not explosion proof. Do not use in the environment with flammable gas (gasoline etc.) or corrosive gas.
3. Do not dismantle the actuator from the valve during power operation.
4. If the actuator is being installed outdoors, then shade the unit from direct sunlight, that may cause the actuator to overheat and become defective.
5. Use cable 9 to 11mm to prevent water ingress.



6. It is recommended that a fuse or circuit breaker is installed for protection, a 5A is recommended by the manufacture.

Connections

AC Supply:



Motor:

- | | |
|---|------------------|
| 1 | -Vac |
| 2 | +Vac Motor open |
| 3 | +Vac Motor close |

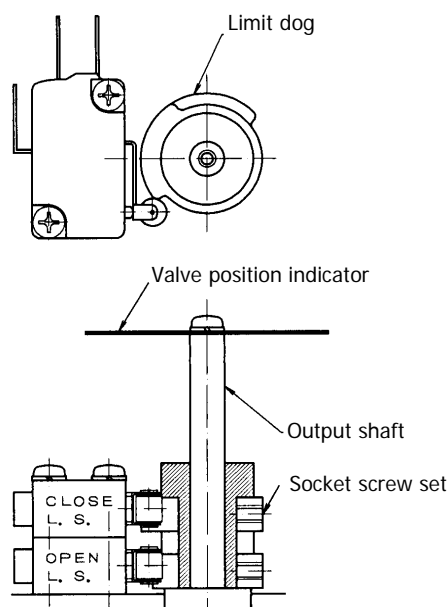
End Switch:

- | | |
|---|--------|
| 4 | Common |
| 5 | Open |
| 6 | Close |

Limit Switch Adjustment

The upper limit switch is for close, lower one is for open direction. 2 extra limit switches (contact output) are available at option.

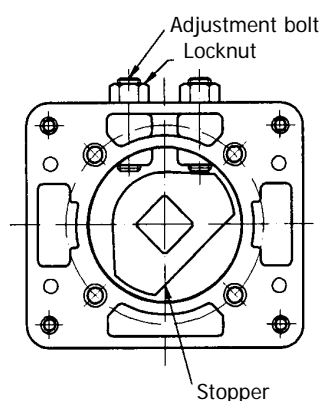
1. Open the valve fully by manual handle. Loosen and turn the lower dog. Confirm that the switch has been off, then screw the dog up.
2. Adjust the close side in the same manner. The adjustment is now over.
3. The limit switch is normally at "A" contact.



1.

Mechanical Stop

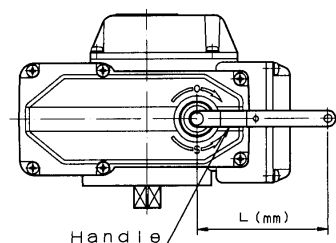
1. Open the valve fully by manual handle.
2. Loosen, and return the stop by 1/2 turn with the adjuster bolt.
3. Screw up the locknut.
4. Adjust close side in the same manner. Adjustment is now over.



Manual operation

1. Cut power off before making manual operation.
2. Insert the manual handle into the hexagonal hole underneath the rubber cap.
3. Turn the handle clockwise for close, counter clockwise for open.

Note: The limit switches become effective at open/close of position meter. The stops are at 1/2 turn beyond those points. Do not apply excessive force to the handle, for it might damage the unit.



Caution

When making manual operation, ensure that power is off. If power is on while manual operation, the handle will suddenly return!

Dimensions

